



Source: Dominick Reuter, MIT News Office, MIT Image Library

MIT TLO

Lesley Millar-Nicholson
Director, Technology Licensing Office
[@mit_tlo](#)

MIT's I&E-focused student groups



HACKING ARTS



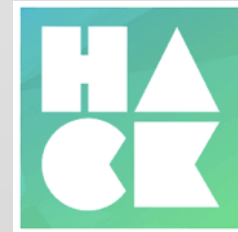
MIT Water Club



MIT ENERGY CLUB

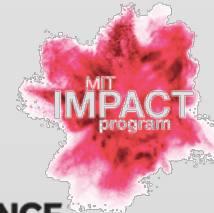


Global Startup



Source: MITii

Innovation and Entrepreneurship at MIT



Source: MITii



2016 TLO Metrics

Total Number of Invention Disclosures	800
Lincoln Lab Disclosures	82
Number of U.S. Patents Filed (Including All Non-Provisional Applications: Ordinary, Priority, Continuation, Divisional, and CIP)	341
Number of U.S. Patents Issued	279
Number of Licenses Granted (Not Including Trademarks and End-Use Software)	110
Number of Options Signed	24
Number of Companies Started	25

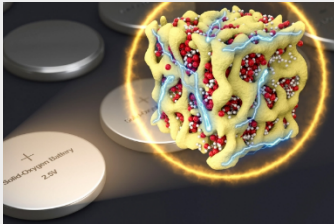
The Role of the TLO

- Receive and **evaluate new ideas** 'inventions' and 'creative works' from faculty and researchers
- Identify, **protect market and license** intellectual property
- Engage with **joint owners** to ensure appropriate management of MIT owned IP
- Assist in the **transfer of materials to and from** third parties
- Coordinate, **review and approve Use of Name** requests at MIT
- Manage MIT's **Trademark Licensing Program** and compliance of Trademark Use

The Role of the TLO

- Identify **background IP** required for sponsored research agreements
- Work with **OSP** on **IP terms for sponsored research**
- **Manage collection of IPIA's** on behalf of the Institute
- Manage **open source licensing**
- Problem solve on IP related issues with faculty, students and post docs
- **Provide educational material**, seminars, workshops on IP and commercialization
- **Distribute royalty revenue** to MIT and faculty inventors

Cool new tools and beyond...



A new concept for battery cathodes
Image and Research: Ju Li et al

Light can "heal" defects in some solar cells.

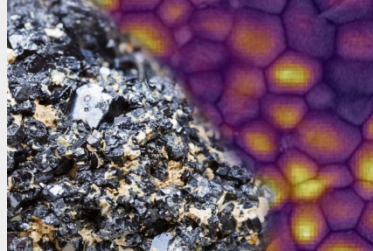
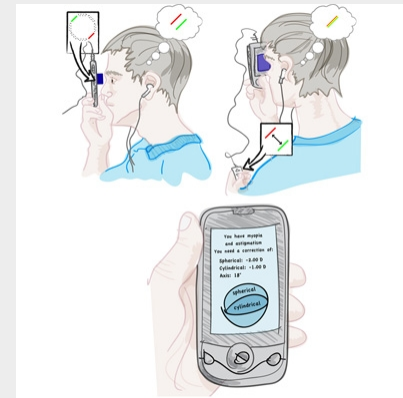


Image and Research: S. Stranks & V Bulović et al.

New, portable, and low-cost optometry system.



Research: Raskar, Pamplona et al
Image: Tiago Allen

Mobile phone compatible quantum dot spectrometer

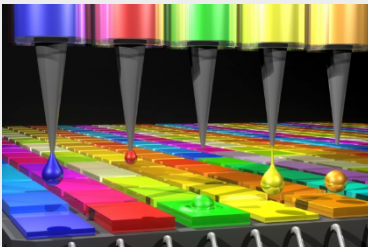
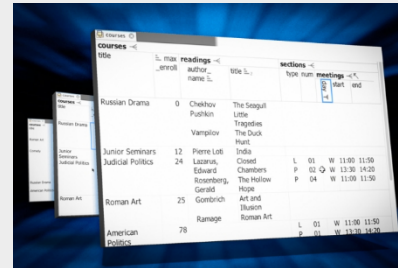


Image: M. O'Reilly, Research: M Bawendi

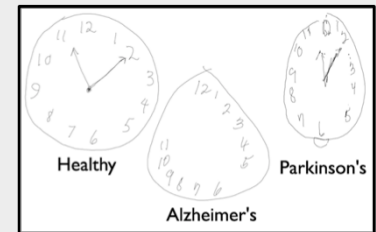
Vibrating footwear



Illustration: Jose-Luis Olivares/MIT,
Research: L. Stirling et al



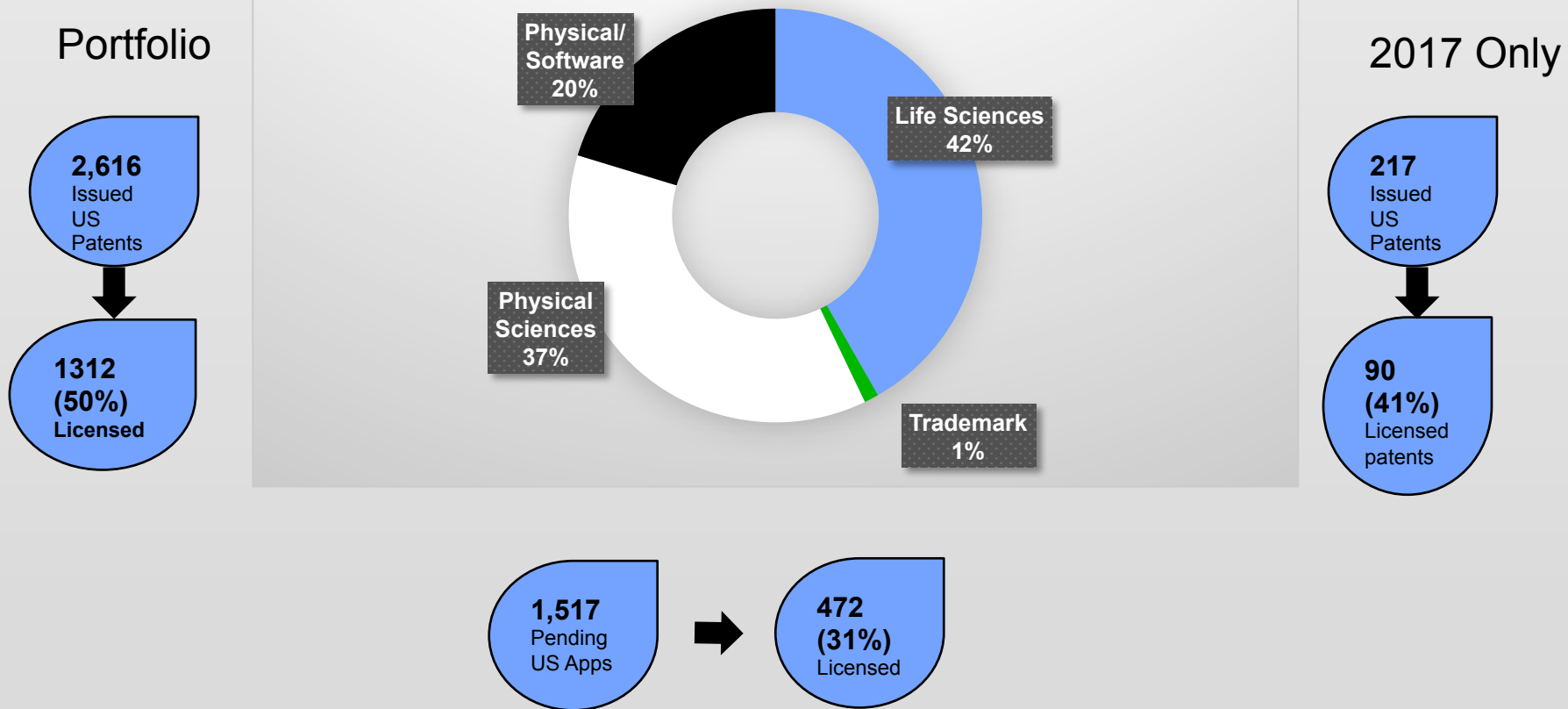
New database interface.
Image: Researchers and MIT News
Research: E. Bakke & D. Karger



A pen to helping screen for dementia and other cognitive disorders.
Image and Research: R Davis et al.

MIT IP Portfolio

FY17 Disclosures by Type



Industry

Licensing MIT Technology

Ready to Sign Software End-User Licenses

- ASWING
- FTTW
- METRAN
- MISES
- MSES
- OASES

Sponsoring Research at MIT

Payment FAQ for Licensees

Ready to Sign Software End-User Licenses

Many of MIT's End Use Software programs are available under Ready to Sign license agreements, which incorporate standard terms and conditions available only to parties who complete and return the agreement to MIT's Technology Licensing Office, as signed by an authorized representative, without modification.

Steps for Completing a Ready to Sign Software End-User License

1. A complete list of available End Use Software can be found on the left panel of this page.
2. Download the PDF license agreement at the end of each page and fill out the PDF license agreement. Licensee must have a valid contact address, e-mail address, and phone number.
3. Fill out the PDF invoice for the license issue fee, if applicable.
4. Return one PDF copy of the partially signed, by an authorized representative, license agreement and invoice along with the appropriate payment (see PDF invoice for instructions) to: software-licenses@mit.edu

If you require a copy of fully executed license agreement, please return **two** original partially signed license agreements along with invoice and appropriate payment to the address below:

*Massachusetts Institute of Technology
Technology Licensing Office, Rm NE18-501
255 Main St., Kendall Square
Cambridge, MA 02142-1601
Attention: Software Licensing Officer
e-mail: software-licenses@mit.edu
Tel: [617-253-6966](tel:617-253-6966)*

Note:

1. The license agreement will not become effective until it is reviewed and fully executed by both parties.

Did You Know?

Currently, approximately 800 companies are working with faculty and students both in Institute-wide programs such as the Industrial Liaison Program and the MIT Energy Initiative, and in smaller collaborations.

According to the National Science Foundation, MIT ranks first in industry-financed research and development expenditures among all universities and colleges without a medical school.